

PERTRONIX®

PERFORMANCE BRANDS

FEATURED PRODUCTS

PERTRONIX®
IGNITION PRODUCTS

JBA®
PERFORMANCE EXHAUST

PATRIOT®
EXHAUST PRODUCTS

The original
**DOUG'S
HEADERS™**



IGNITION+ POWER PACKAGE

PERTRONIX
IGNITION PRODUCTS

Flame-Thrower III Coil
+
Digital HP Ignition Box



Part #510C: [\\$291.59](#)

More Power
Faster Starts
Higher RPM Range
Quicker Acceleration

IGNITION POWER PACKAGE

The perfect combinations are planned, and we've done just that taking two of our best sellers and combining them in one package for the optimal pairing.

Includes:

- Flame-Thrower® III Canister Coil
- Digital HP Capacitive Discharge Ignition Box

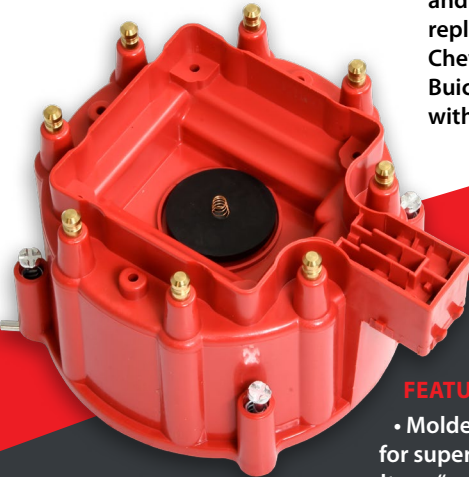
PERTRONIX
PERFORMANCE BRANDS

FEATURED PRODUCTS

Value (added) HEI Distributors and Cap and Rotor kits that rival OE specifications but not your wallet.

HEI CAP & ROTOR FOR YOUR **GM V8**

Cap and Rotor Kit comes with everything you need including rotor hold-down screws. Each kit meets or exceeds OEM specifications and serves as direct replacement for 1975-1990 Chevrolet, GMC, Oldsmobile, Buick, Pontiac and Cadillac with GM HEI Ignition.



[Part #D4011:](#)
[\\$43.19](#)

FEATURES:

- Molded from PBT compound for superior protection from voltage "arc-thru" and cross-fire
- Brass cap terminals and rotor contact resist corrosion and provide maximum spark distribution
- Includes OEM spec carbon center contact plus low resistance option for high output ignitions
- New rotor screws included

HEI DISTRIBUTOR FOR YOUR **CHEVY SB/BB**

Flame-Thrower®



[Part #D1061:](#) [\\$177.11](#)

Adjustable vacuum advance canister, high dielectric strength red cap and rotor with brass terminals

FEATURES:

- Fits Chevrolet Small and Big Block V8 engines
- Dependable coil and module that exceed OEM specifications
- Welded mechanical advance pins for durability
- Simple, single wire hook up
- 50 state emissions legal C.A.R.B. E.O #D-57-23
- Limited One Year Warranty

TFI CAP & ROTOR FOR YOUR **FORD**

Cap and Rotor Kit meets or exceeds OEM specifications and serve as direct replacements for 1980-1997 Ford, Mercury, and Lincoln with Ford TFI Ignition.



FEATURES:

- Molded from PBT compound for superior protection from voltage "arc-thru" and cross-fire
- Brass cap terminals and rotor contact resist corrosion and provide maximum spark distribution
- Includes spark plug wire retainer for high vibration and racing applications

[Part #D4021:](#)
[\\$43.19](#)

LATE MODEL COILS

PerTronix has expanded our popular Flame-Thrower® Coil line with new offerings for late model GM, Chrysler, and Ford applications. Whether it's a performance application with add-ons or an increase in power for the stock ignition, Flame-Thrower® coils won't disappoint.

**INCREASE YOUR ENGINE'S
SPARK ENERGY**



NEW APPLICATIONS:

- Ford Coyote 5.0L
- GM Gen V LT 1
- GM Gen V LT1, Round
- GM LS Truck, Square
- Chrysler Hemi 5.7L
- Chrysler Hemi, Dual Plug
- Chrysler V6
- Ford EcoBoost
- Ford V6 EcoBoost, 2-PIN Gray
- Ford V6 EcoBoost, 3-PIN Brown
- Ford V6 2.7L EcoBoost

FEATURES:

- 15% more available spark energy burns all fuel in the cylinders for more power, quicker starting, and improved mileage
- Designed to perfectly fit the factory mounting holes for direct OE replacement fit
- OEM style factory connectors plug directly into factory wiring harness and lock directly into place
- Where applicable, high temperature boots secure the spark plug insulating the high voltage ensuring all energy is delivered to the spark plug
- High temperature epoxy insulates the coil windings to prevent voltage breakdown in high temperatures

*Available in single
or in packs.*

Flame-Thrower®

SPECIALTY DISTRIBUTORS

PerTronix has expanded our Flame-Thrower® Billet Distributor line to include specialty, niche applications for the discerning automotive enthusiast.

**FLAWLESS
ENGINE TIMING**



NEW APPLICATIONS:

- AMC Jeep L6
- Buick Nailhead
- Cadillac 331-390
- Cadillac 472-500
- Chevy 194-235
- Chevy Corvair
- Chrysler 331-354
- Chrysler 392 Hemi
- Ford 49-53 Flathead
- Ford Y-Block
- Holden V8
- Studebaker V8

FEATURES:

- Equipped with PerTronix Ignitor II Technology, you will never have to replace your points again!
- Precision CNC machined 6061-T6 billet aluminum housing is lightweight yet strong. Polished billet aluminum housing provides the option to show off the engine bay.
- Upper Ball Bearings and lower bushings reduce vibrations at higher RPM's
- Fully adjustable mechanical advance spring and limiters to tailor the advance curve



EXHAUST ELECTRONIC **CUTOUTS**

Out for a cruise or out on the track, Patriot Exhaust Electronic Cutouts give you complete control over the sound of your exhaust and you can do it all with a wireless remote that features a simple, two wire hook up.

OPEN UP YOUR POSSIBILITIES

WITH A PUSH OF A BUTTON



[PEC250K 2.5" Dual: \\$478.03](#)

[PEC250K-1 2.5" Single: \\$242.98](#)

[PEC300K 3" Dual: \\$478.03](#)

[PEC300K-1 3" Single: \\$242.98](#)



FEATURES:

- Available in 2.5" or 3.0" Diameters
- Available in Dual \$369.99 or Single Kits \$199.99
- Stainless Steel Construction resists rust and corrosion over time while boasting superior strength and good looks
- Unlike the competition, we've saved time and money with no welding of the Y-Pipe required. This is a DIY bolt-on installation. No trips to the muffler shop
- Leak free design with butterfly valve that seals against a recess machined body, or lip to prevent nasty leaks
- Compact size for easy installation with versatile mounting locations, fits a broad range of applications and allows for clearance on lowered vehicles
- Turn Outs are located on a spin ring to allow 360-degree adjustability
- Wireless remote with two wire hook-ups to the battery or fuse panel. No in car switch required, no holes through the car to run wires

FEATURED PRODUCTS



FOR YOUR JEEP

Power, performance and reliability is undoubtedly front of mind when we venture off the beaten path. An aftermarket exhaust system is part of the crux of a vehicle's powerhouse and JBA has plenty of history here.

EXPERIENCE YOUR JEEP WITH JBA



NEW APPLICATIONS:

- 2018-2020 Gladiator
- 2018-2020 JL
- 2007-2018 JK
- 2004-2006 TJ 2.5/4.0
- 2000-2006 TJ 2.5/4.0
- 1987-1996 YJ 2.5/4.0/4.2
- 1997-1999 TJ 4.0

FEATURES:

- Constructed from corrosion resistant 304 Stainless Steel for the longevity and integrity to withstand exposure to the elements that are inherent to the Jeep lifestyle.
- Simple, bolt-on installation with no welding or cutting required.
- Exhaust makes itself known with a mild, throaty intonation, distinctly aftermarket with being overwhelming.
- Mid-range price points suit a wide range of buyers and vehicle types.



FOR YOUR TRUCK/SUV

JBA Performance Exhaust has been a leader in Stainless Steel Headers and Exhaust Systems for Performance Cars and Trucks with our 50 state emissions legal exhaust products - our CAT4Ward® Headers that have more E.O.'s than any other brand.

POWER + EFFICIENCY



EXHAUST

The capacity for power gives JBA Exhaust Systems the edge. Each system is tuned to provide the best possible exhaust tone without being overwhelming inside your vehicle.

By replacing the restrictive factory exhaust system with free flowing mandrel-bent stainless steel tubing and quality performance mufflers, JBA has developed the power, sound, and efficiency you desire for your car, truck or SUV.



HEADERS

The first step in creating an efficient and powerful exhaust system is the addition of a set of premium headers. Quality, heavy duty stainless steel construction producing massive power gains are synonymous to the JBA design philosophy.



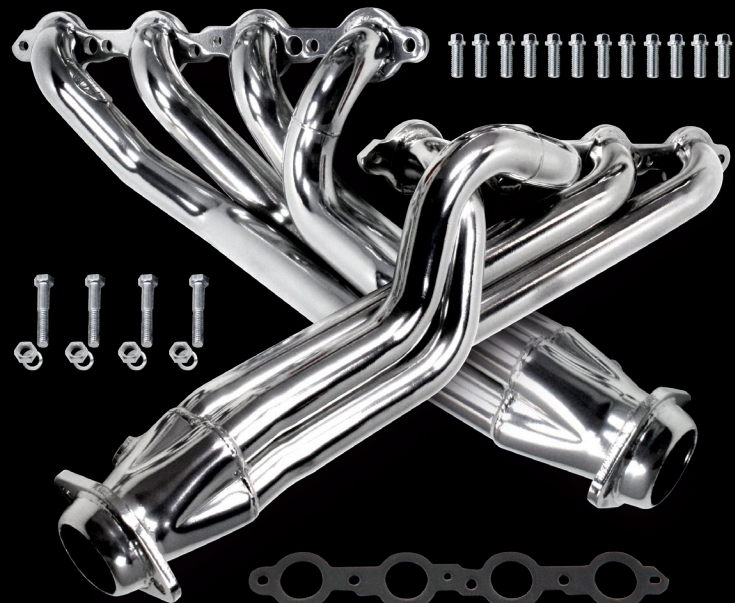
ENGINE SWAP HEADERS

Designed for tight spaces. Doug's Headers offers some very popular engine swap kits which are designed to fit many aftermarket engine swap kits. Our headers accommodate the horsepower and torque that performance engines produce, while fitting the tightest engine swap applications. Let's name just a few!

DESIGNED FOR TIGHT PLACES



1 3/4" 4-Tube Full Length Header Ford Mustang 1964-73 Fairlane
1966-67 Falcon 1960-65 Cougar 1967-68 Coyote 5.0 Swap.
([Part #D6652](#))



1 3/4" 4-Tube Shorty Header Chevrolet
Camaro LS1/LS6 1970-81 ([Part #D335](#))

1 3/4" 4-Tube Full Length Header Chevrolet
Chevelle LS1-LS6 1964-72 ([Part #D3336](#))



FEATURES:

- 3/8" Thick machined flanges... no warping
- CNC mandrel bent tubes... accurate fit & better flow
- Precision formed long transition collectors and long tube design... reduces backpressure and increases higher RPM horsepower
- Heavy 16 gauge tubing... longer life
- Tubes are pre-polished to remove scratches and the header is left unfinished (raw steel) for individual customizing

PERTRONIX®

PERFORMANCE BRANDS

909-599-5955

440 E Arrow Hwy • San Dimas, CA 91773

Five Decades of Excellence

www.pertronixbrands.com



Follow Us

